

ROTRON® Regenerative Blowers

EN 505M & CP 505M Sealed Regenerative Blower w/Explosion-Proof Motor

FEATURES

- Manufactured in the USA – ISO 9001 compliant
- Maximum flow: 160 SCFM
- Maximum pressure: 62 IWG
- Maximum vacuum: 60 IWG
- Standard motor: 2.0 HP, explosion-proof
- Cast aluminum blower housing, cover, impeller & manifold; cast iron flanges (threaded); teflon lip seal
- UL & CSA approved motor with permanently sealed ball bearings for explosive gas atmospheres Class I Group D minimum
- Sealed blower assembly
- Quiet operation within OSHA standards

MOTOR OPTIONS

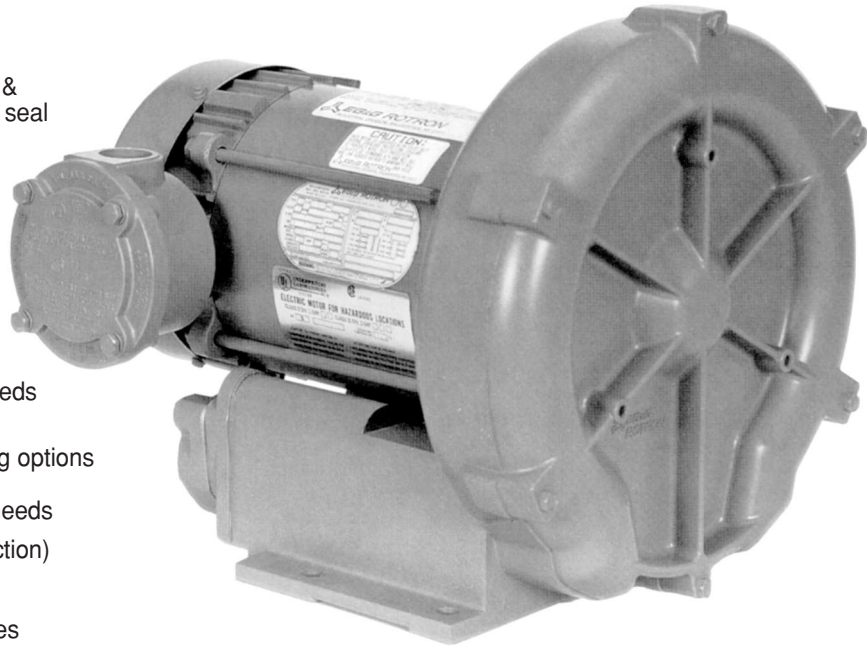
- International voltage & frequency (Hz)
- Chemical duty, high efficiency, inverter duty or industry-specific designs
- Various horsepower for application-specific needs

BLOWER OPTIONS

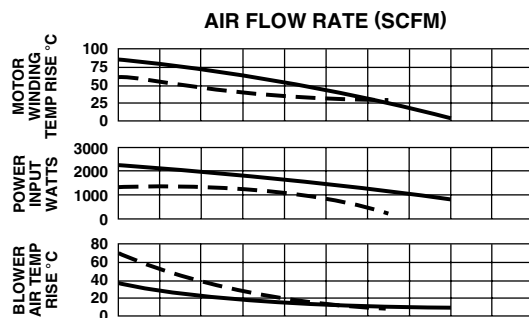
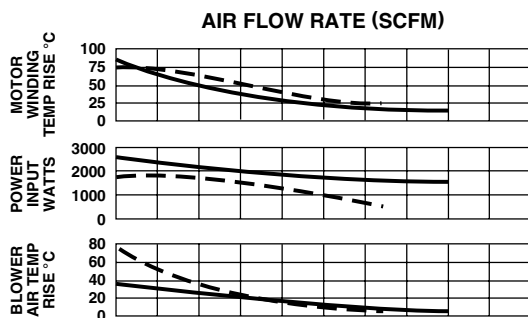
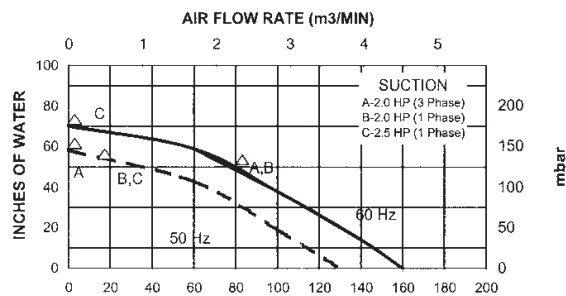
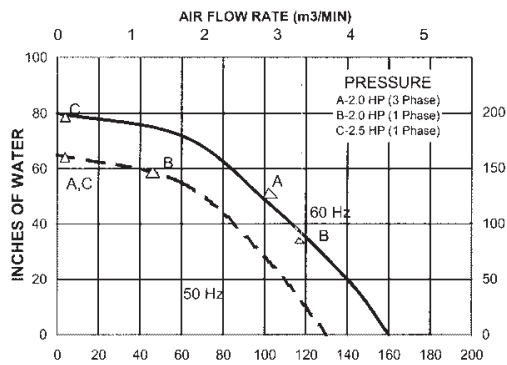
- Corrosion resistant surface treatments & sealing options
- Remote drive (motorless) models
- Slip-on or face flanges for application-specific needs

ACCESSORIES (See Catalog Accessory Section)

- Flowmeters reading in SCFM
- Filters & moisture separators
- Pressure gauges, vacuum gauges & relief valves
- Switches – air flow, pressure, vacuum or temperature
- External mufflers for additional silencing
- Air knives (used on blow-off applications)
- Variable frequency drive package



BLOWER PERFORMANCE AT STANDARD CONDITIONS

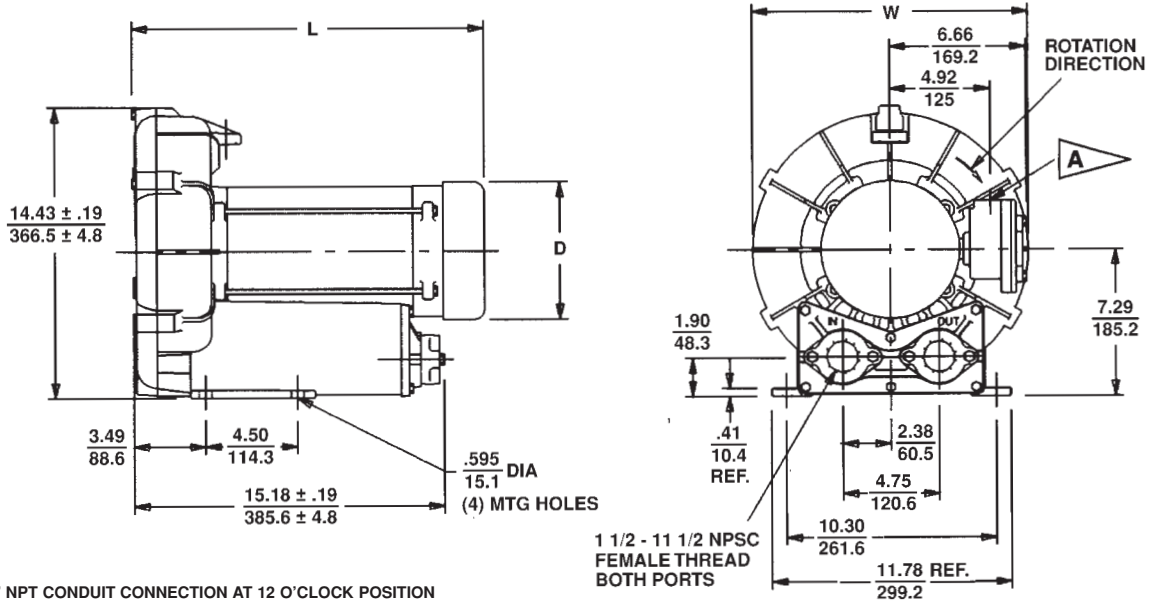


Rev. 2/04

ROTRON® Regenerative Blowers

EN 505M & CP 505M Sealed Regenerative Blower w/Explosion-Proof Motor

Scale CAD drawing available upon request.



A 0.75" NPT CONDUIT CONNECTION AT 12 O'CLOCK POSITION

DIMENSIONS:	IN MM
TOLERANCES:	.XX ± .08 2.0 .XXX ± .030 .800
(UNLESS OTHERWISE NOTED)	

MODEL	L (IN) ± .30	L (MM) ± 8	D (IN)	D(MM)	W(IN)	W(MM) ± 5 MM
EN/CP505AX72ML	16.0	405	6.84	173	13.53	344
EN/CP505AX58ML	17.21	437	6.84	173	13.53	344
EN/CP505CJ5ML	18.57	472	7.32	186	13.53	344

SPECIFICATIONS

MODEL	EN505AX58ML	EN505AX72ML	EN505CJ5ML	CP505FS58MLR	CP505FS72MLR
Part No.	038177	038178	038445	080655	038962
Motor Enclosure – Shaft Material	Explosion-proof – CS	Explosion-proof – CS	Explosion-proof – CS	Chem XP – SS	Chem XP – SS
Horsepower	2.0	2.0	2.5	Same as EN505AX58ML – 038177 except add Chemical Processing (CP) features from catalog inside front cover	Same as EN505AX72ML – 038178 except add Chemical Processing (CP) features from catalog inside front cover
Phase – Frequency ¹	Single - 60 Hz	Three - 60 Hz	Single - 60 Hz		
Voltage ¹	115 230	230 460	230		
Motor Nameplate Amps	17.2 8.6	5.8 2.9	15.5		
Max. Blower Amps ³	22.0 11.0	6.4 3.2	14.0		
Inrush Amps	112 56	56 28	86		
Starter Size	1 0	0 0	1		
Service Factor	1.0	1.0	1.0		
Thermal Protection ²	Class B - Pilot Duty	Class B - Pilot Duty	Class B - Pilot Duty		
XP Motor Class – Group	I-D, II-F&G	I-D, II-F&G	I-D, II-F&G		
Shipping Weight	95 lb (43 kg)	87 lb (40 kg)	103 lb (228 kg)		

¹ Rotron motors are designed to handle a broad range of world voltages and power supply variations. Our dual voltage 3 phase motors are factory tested and certified to operate on both: **208-230/415-460 VAC-3 ph-60 Hz** and **190-208/380-415 VAC-3 ph-50 Hz**. Our dual voltage 1 phase motors are factory tested and certified to operate on both: **104-115/208-230 VAC-1 ph-60 Hz** and **100-110/200-220 VAC-1 ph-50 Hz**. All voltages above can handle a ±10% voltage fluctuation. Special wound motors can be ordered for voltages outside our certified range.

² Maximum operating temperature: Motor winding temperature (winding rise plus ambient) should not exceed 140°C for Class F rated motors or 120°C for Class B rated motors. Blower outlet air temperature should not exceed 140°C (air temperature rise plus inlet temperature). Performance curve maximum pressure and suction points are based on a 40°C inlet and ambient temperature. Consult factory for inlet or ambient temperatures above 40°C.

³ Maximum blower amps corresponds to the performance point at which the motor or blower temperature rise with a 40°C inlet and/or ambient temperature reaches the maximum operating temperature.

Specifications subject to change without notice. Please consult your Local Field Sales Engineer for specification updates.

Rev. 2/04